

ACTIVITY

# Youth Trust Barometer

## QUESTIONNAIRE

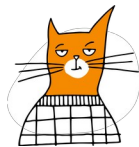
### PUBLIC SECTOR

On a scale of 1 to 5, how much do I trust...

- the university?
- the police forces?
- the public health system?
- my country's welfare (social security) system?
- local public services (transport, school canteen, waste collection, etc.)?
- the environmental protection authorities?
- the justice system?
- the parliament?
- local politics?

### PRIVATE SECTOR

On a scale of 1 to 5, how much do I trust...





- the food industry?
- large-scale distribution?
- local shops?
- the energy industry (electricity, gas, etc.)?
- private transport and public works concession companies (e.g. motorways)?

